

Concept Fire Truck (CFT)

Concept study for the fire truck of the future



Base specification

Vehicle concept:

- › Electric power: 350 kW
- › Length: 300 in
- › Width: 92,5 in
- › Height: 121 in
- › Wheelbase: 150 in
- › Weight empty: 23,150 lb
- › Weight full: 38,800 lb
- › Adjustable ground clearance: 10-14 in
- › Aluminium superstructure

Crew cockpit:

- › CFT integrated crew cockpit
- › Command & communication center
- › Crew: 1+7
- › 4 SCBA COMFORT brackets
- › 2 crew cab sliding glass doors
- › Access height: 6 in

Equipment compartment:

- › COMFORT fixing systems for optimal retrieval and secure storage
- › Color coding for handles and controls

Control system:

- › Rosenbauer intuitive control based on CAN-bus technology for all electrical functions

Extinguishing system:

- › Normal pressure pump NH35
- › Normal pressure: 750 gpm @ 150 psi
- › High pressure: 80 gpm @ 600 psi
- › Pump drive electric or mechanic
- › Water tank content: 320 gal

Light concept:

- › Integrated high performance and shadowless LED surround illumination
- › Adjustable LED ambient lighting in the crew cab
- › LED compartment lighting

Communication:

- › WLAN hotspot
- › External displays

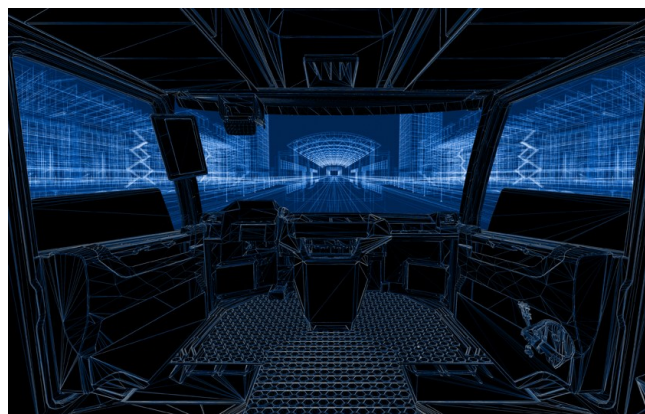
Concept Fire Truck (CFT)

Concept study for the fire truck of the future



Dimensions and weight

L x W x H	300 x 92,5 x 121 in
Permissible total weight	38,800 lb



Contact

Rosenbauer International AG
Paschinger Straße 90
4060 Leonding, Austria
Tel.: +43 732 6794-0
Fax: +43 732 6794-91

www.rosenbauer.com

www.facebook.com/rosenbauergroup

Text and images non-binding. The images may depict special editions that are only available at an additional charge.
Subject to change due to technical advances.

Vers. 1.0
PFin_2017-03-24